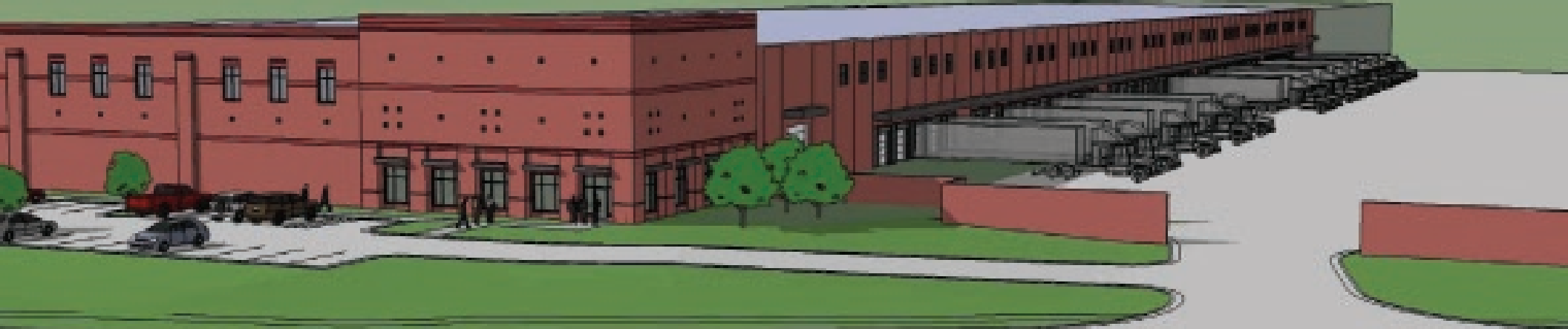


# FOR LEASE

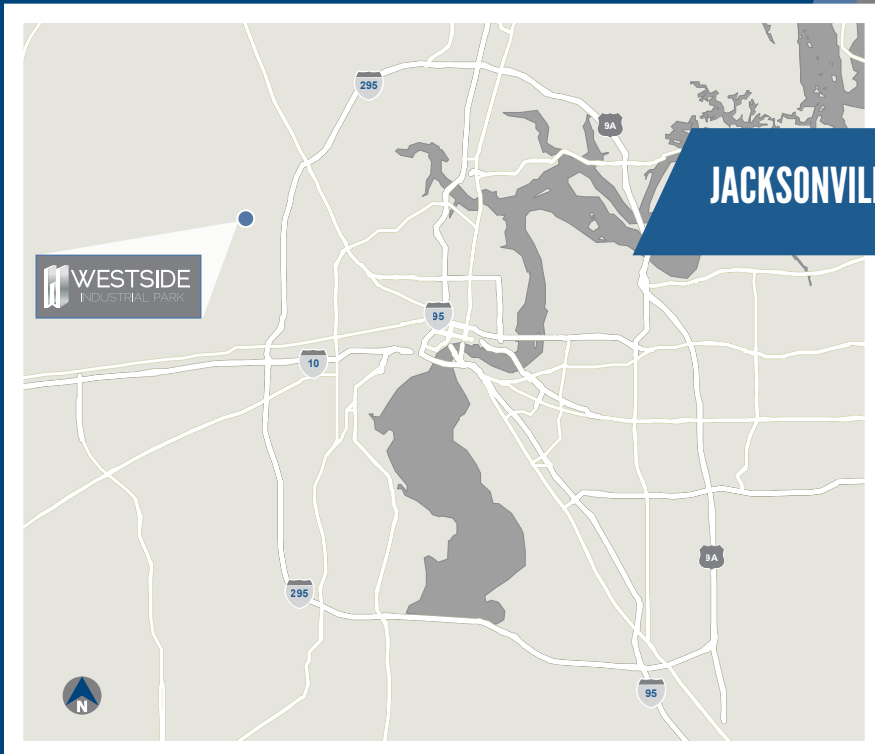
237,318 SF OF INDUSTRIAL SPACE AVAILABLE  
DIVISIBLE TO 78,000 SF



4948 BULLS BAY HIGHWAY, JACKSONVILLE, FLORIDA

 **WESTSIDE**  
INDUSTRIAL PARK

- 237,318 s.f. (divisible to 78,000 s.f.) of premier industrial space zoned for distribution, manufacturing and/or warehouse capabilities
- Office space built to suit
- 32' clear ceiling height
- Sixty (60) 10' x 9' dock high doors
- One (1) 12' x 14' drive-in ramp
- ESFR fire sprinkler system
- 180' truck court
- Electrical system installed to suit
- Outside storage available



**Westside Industrial Park** is the largest industrial park in Northeast Florida, and home to a high percentage of the paramount manufacturing and distribution facilities in the Jacksonville market. Availabilities within the park range from 6,000 to 237,000 square feet, and offer quick access to major highways, ports, and airport.



[www.westsideindustrialpark.com](http://www.westsideindustrialpark.com)

For additional information:

Luke Pope  
 Vice President  
 +1 904 356 4550  
 luke.pope@am.jll.com



©Jones Lang LaSalle IP, Inc. All rights reserved.  
 All information contained herein is from sources deemed reliable; however, no representation or warranty is made to the accuracy thereof.

